

Established in 1940 – 85 Years of Heritage

"Together with Oku-Nikko' s Nature, Culture, and the Guests Who Made This Journey with Us"

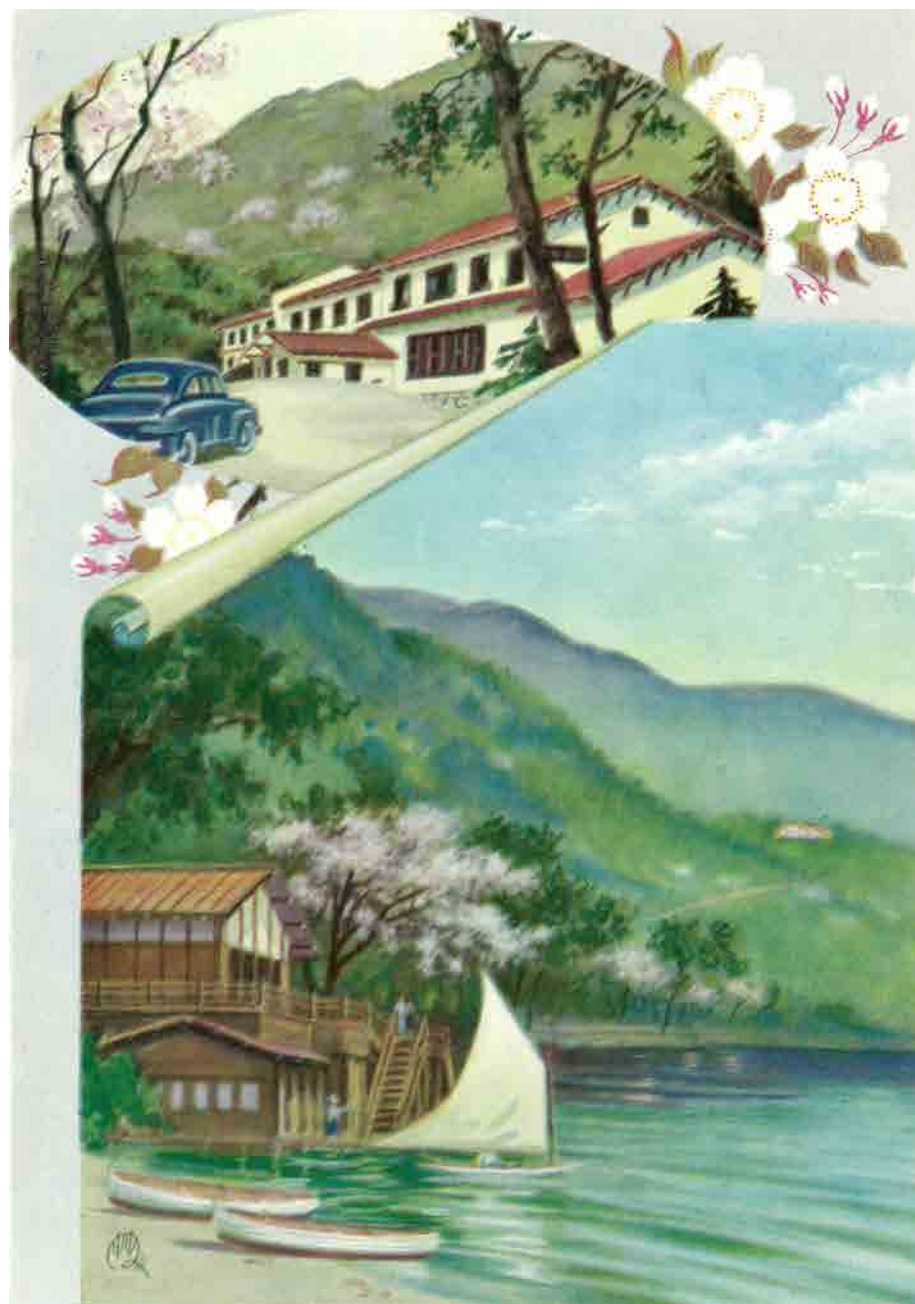
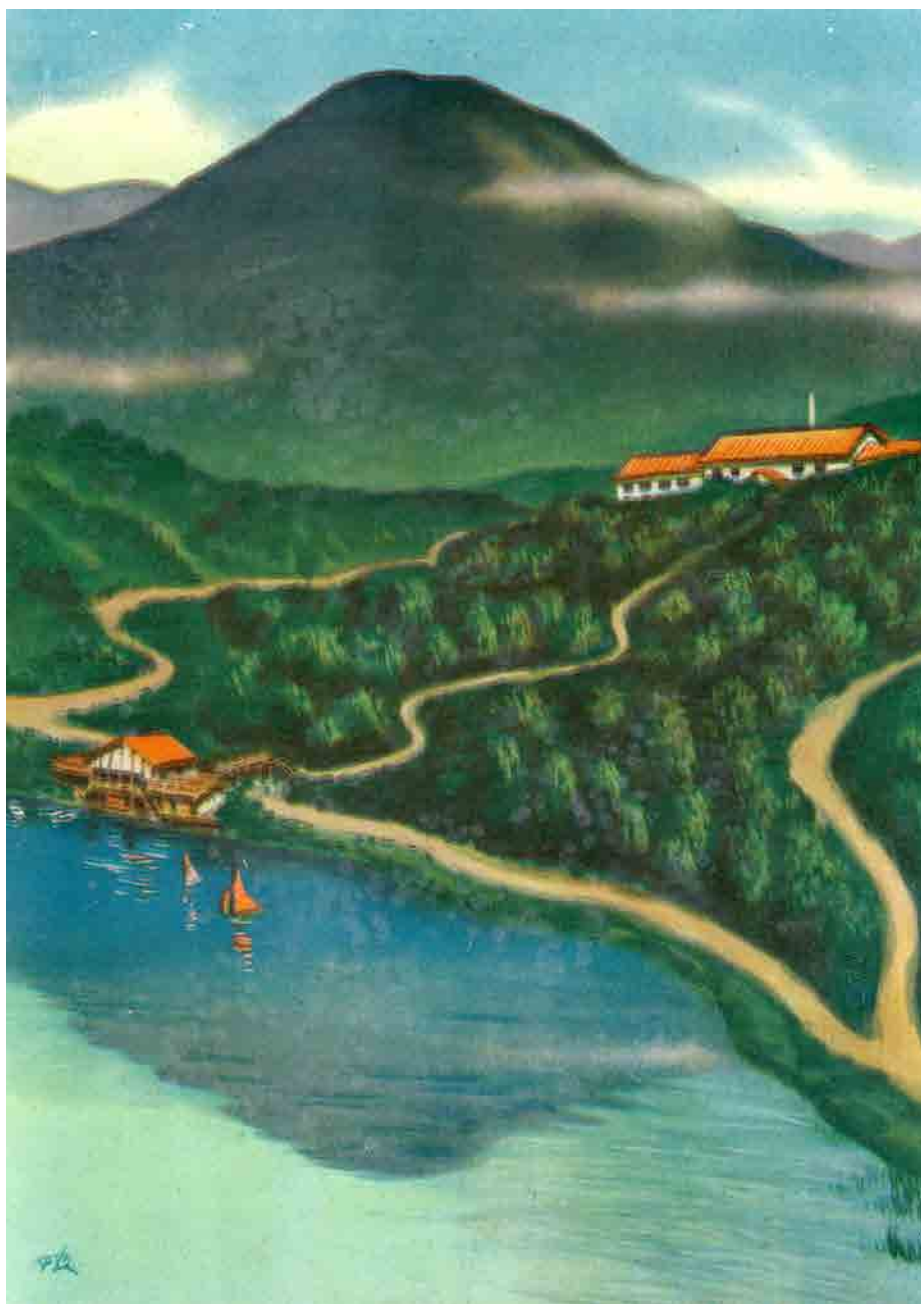


Cheers to 85 Years!

From Nikko Kanko Hotel to Chyuzenji Kanaya Hotel

Established in 1940 – 85 Years of Heritage

"Together with Oku-Nikko's Nature, Culture, and the Guests Who Made This Journey with Us"



日光観光ホテルのために作られたバゲッジタグやイラストには、中禅寺湖や男体山など奥日光ならではの豊かな自然、そしてそこで楽しめるアクティビティが描かれたものが多く残されています。

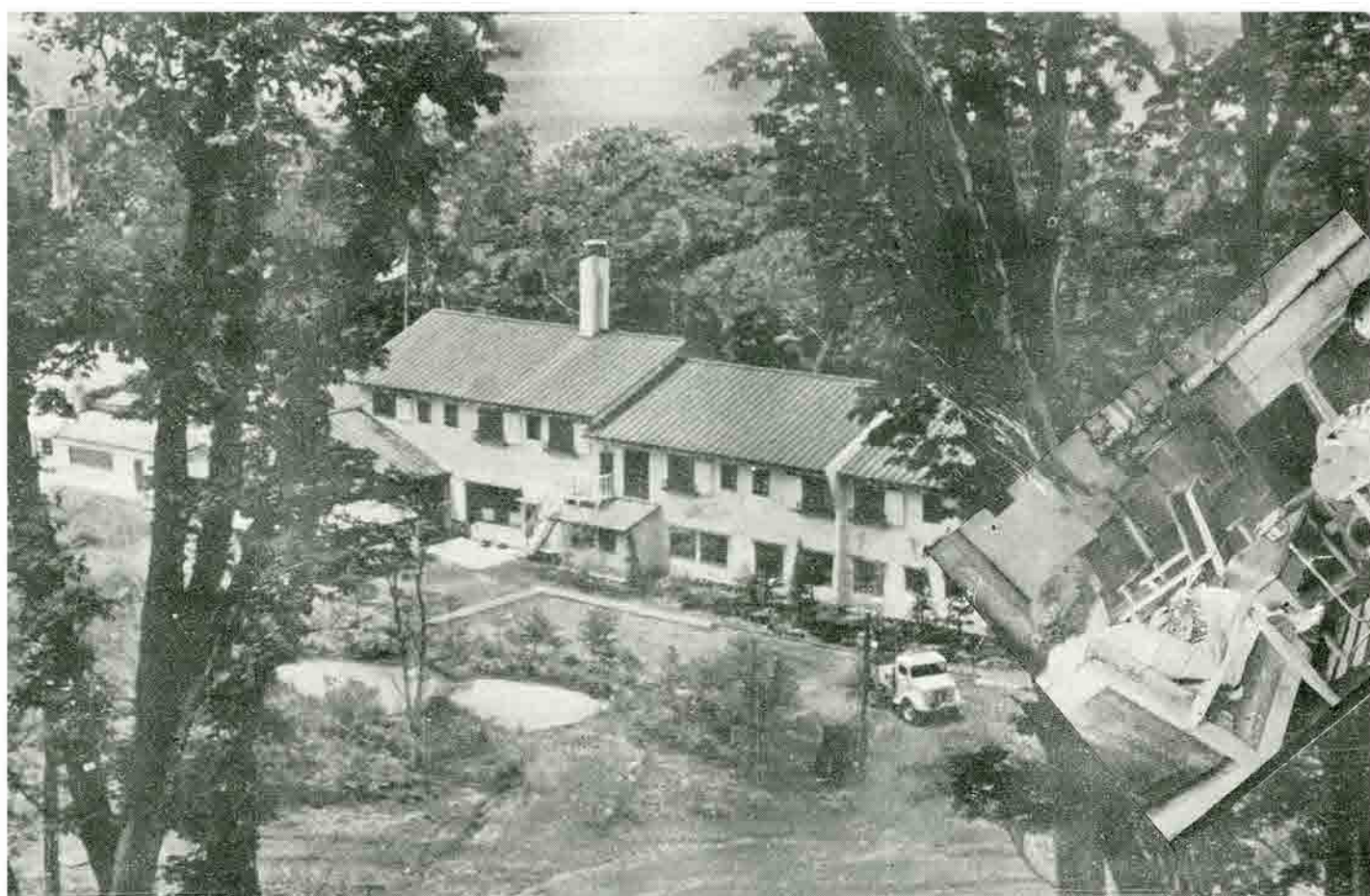
その後、中禅寺金谷ホテルと改称された頃から、鹿のモチーフが頻繁に採用されるようになりました。

Many baggage tags and illustrations created for the Nikko Kanko Hotel depict the rich nature unique to Oku-Nikko, such as Lake Chuzenji and Mount Nantai, as well as the activities that can be enjoyed there. Subsequently, around the time the hotel was renamed Chuzenji Kanaya Hotel, deer motifs began to be frequently adopted.

Cheers to 85 Years!
From Nikko Kanko Hotel to Chyuzenji Kanaya Hotel

日光観光ホテルから中禅寺金谷ホテルへ 85 年

奥日光の豊かな自然と歴史とお客様と共に



Nikko Kanko Hotel

LAKE CHUZENJI

NIKKO NATIONAL PARK JAPAN

TOKYO INQUIRY OFFICE
TEL. GINZA 6212
2-3 CHOME, SHINBASHI,

TELEPHONE
NIKKO-CHIUGUSHI 24

ALL YEAR PLAYGROUND OF JAPAN

Fishing, Sailing, Hiking, Swimming,
Skiing and Skating

Enjoy life in this mountain lodge situated in a private park of 25 acres, combining in it's architecture the charm and beauty of Japan with every modern convenience and comfort, set in an ideal spot some sixty feet above the level of beautiful Lake Chuzenji.

Steam heat, 24 hours hot water service and a highly trained English speaking staff will add to your contentment.

COME IN THE SPRING to see the hillside aflame with the mountain azaleas and to go boating on placid Lake Chuzenji as you look at the famous Nikko cherry blossoms.

COME IN THE SUMMER to enjoy the coolness of mountain air, to go swimming and fishing. Lake Chuzenji and the Yugawa River are plentifully stocked with salmon trout, rainbow trout and other varieties from the fish Hatcheries. Fishing licences and fees can be arranged through the management.

COME IN THE AUTUMN to hike through the maple tunnel at the foot of the Lodge grounds when the woods are a mass of glorious crimson and gold and the weather is perfect.

COME IN THE WINTER to go skiing and iceskating, to find comfort, after exhilarating outdoor sports, in the warmth of huge log fires and well furnished steamheated rooms.



COME ANYTIME to enjoy the mountain scenery, excellent cuisine and efficient service of this delightful mountain hostelry.

RATES

(American plan only)

FOREIGN STYLE ROOMS
SINGLE ROOMS

Without bath... ¥
With bath ... ¥

DOUBLE ROOMS

Without bath... ¥
With bath ... ¥

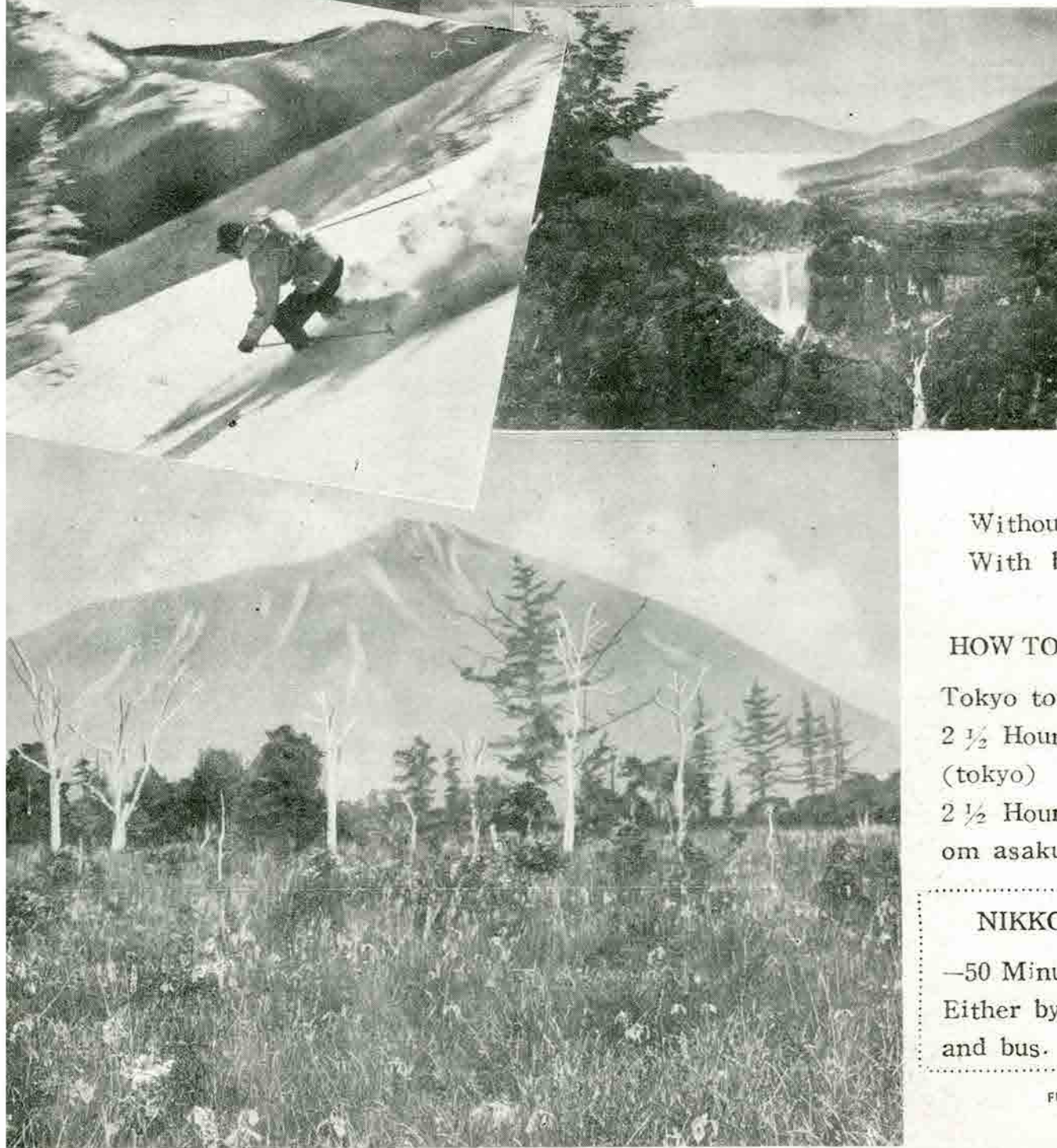
HOW TO REACH THE HOTEL

Tokyo to Nikko
2 ½ Hours by train from ueno (tokyo)
2 ½ Hours by electric car from asakusa (tokyo)

NIKKO TO THE HOTEL

—50 Minutes only.
Either by car or by cable car and bus.

PRINTED BY
FUKUYOSHI PAPER CO. LTD.
TEL. 6681 TOKYO



中禅寺金谷ホテル開業 85 周年